



MS-4 Agarose

A molecular screening agarose for improved resolution of DNA fragments with 500 bp or less, especially sized– primer fragments. MS-4 is a type of agarose unique to Conda.

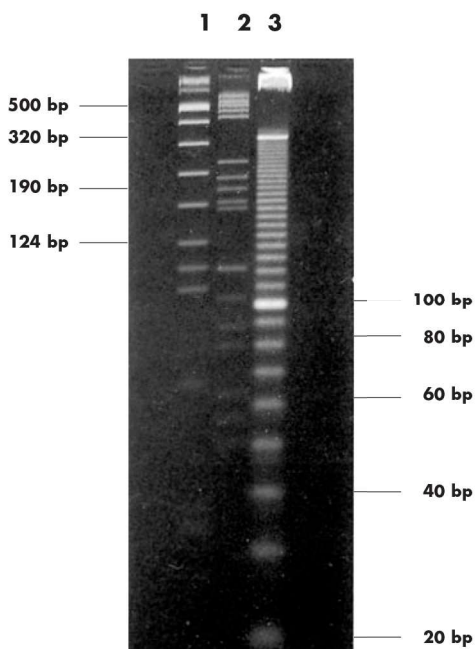
At 3 % concentration, MS-4 Agarose gives a resolution of DNA fragments similar to gels made with polyacrylamide at concentrations of 8 %. While MS-4 may be dissolved carefully by microwaving, gels are best prepared by autoclaving.

Features:

- Excellent resolution of DNA fragments lower than 500 bp, specially smaller sized– primer fragments.
- Forms a very clear, transparent gel, even at concentrations of 5% or higher.
- Efficient mechanical handling at all concentrations. The chances of gel breaking or cracking when handled are greatly minimized.

Functional Tests:

- DNA resolution: bands appear sharp and finely resolved.
- DNase/RNase activity: none detected.
- Gel background: very low after EtBr staining.
- DNA binding: very low.



MS-4 Agarose gel, 4% in 0.5XTBE buffer.
 Markers: lane 1- Molecular weight marker VIII (Roche)
 lane 2- Molecular weight marker V (Roche)
 lane 3- 10 bp ladder.
 Electrophoresis conditions: submarine gel, 2 hours 30 min.,
 4.5 V/cm in 0.5XTBE buffer.

Specifications:

	3 %	5 %
Moisture	≤ 7%	
Ash	≤ 0.3%	
EEO	≤ 0.12%	
Sulfate	≤ 0.11%	
Clarity (NTU)	≤ 7.5	
Gel Strength (g/cm ²)	≥ 500	≥ 1000
Gelling Temperature (°C)	≤ 31	
Melting Temperature (°C)	≤ 70	

Ranges of separation:

3%	80 – 500 bp
4%	30 – 300 bp
5%	10 – 200 bp

These ranges are approximate and have been calculated in 1XTAE buffer.

To achieve the best resolution of MS – 4 Agarose gels, store at 4° - 8°C for 20 hours before use.